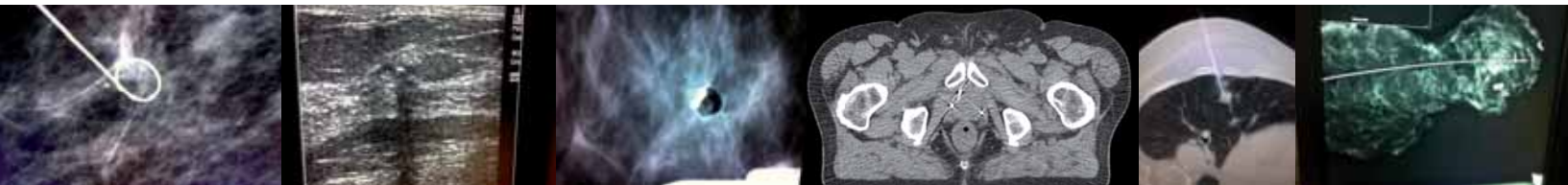




vigeo

Healthcare Solutions



EXPORT CATALOGUE



vigeo



- One-handed design simplifies loading and operation whilst allowing for convenient manipulation of the ultrasound transducer
- Automatic mode: releases cannula and stylet in rapid sequence and captures tissue sample with the push of a button
- Semiautomatic: releases the stylet allowing time for tissue to settle in notch (ideal for denser tissue or when there is a desire to verify notch position), and activates the cutting cannula
- 20mm sample notch and thin-wall cannula for larger core
- Colour coded for quick gauge size identification
- Depth markings etched on cannula for precise positioning
- The Coaxial outer needle permits multiple biopsies (US and CT guided)
- Commonly used for the following biopsy procedures: Breast , Kidney, and Lung



One-handed design simplifies loading and operation whilst allowing for convenient manipulation of the ultrasound transducer

COMPACT Qty/Box 10pcs

Add **C** for Coaxial set (VCTC)

Add **1** for Trocar tip (VCT1)

Add **A** for Prostate kit (VCTA)

CODE	SIZE	COAXIAL KIT
● VCT1210	12Gx10cm	VCTC1210
● VCT1410	14Gx10cm	VCTC1410
● VCT1415	14Gx15cm	VCTC1415
● VCT1615	16Gx15cm	VCTC1615
● VCT1810	18Gx10cm	VCTC1810
● VCT1815	18Gx15cm	VCTC1815
● VCT1820	18Gx20cm	VCTC1820
● VCT1825	18Gx25cm	VCTC1825
● VCT2010	20Gx10cm	VCTC2010
● VCT2015	20Gx15cm	VCTC2015

On request Vigeo is available to provide needles with different diameter and length

Automatic Biopsy Device



- One-handed design simplifies loading and operation whilst allowing for convenient manipulation of the ultrasound transducer
- Equipped with a visual and mechanical safety-system
- 20mm sample notch and thin-wall cannula for larger core
- Two triggers permit ergonomic handling for right and left-handed application, regardless of the position of the extraction location
- Colour coded for quick gauge size identification
- Depth markings etched on cannula for precise positioning
- The Coaxial outer needle permits multiple biopsies (US and CT guided)
- Commonly used for the following biopsy procedures: Breast, Kidney, and Prostate



Mechanical safety-system



One-handed design

COREX Qty/Box 10pcs

Add **C** for Coaxial set (VBSC)

Add **1** for Trocar tip (VBS1)

Add **A** for Prostate kit (VBSA)

CODE	SIZE	COAXIAL KIT
● VBS1410	12Gx10cm	VBSC1210
● VBS1415	14Gx15cm	VBSC1415
● VBS1610	16Gx10cm	VBSC1610
● VBS1615	16Gx15cm	VBSC1615
● VBS1810	18Gx10cm	VBSC1810
● VBS1815	18Gx15cm	VBSC1815
● VBS1820	18Gx20cm	VBSC1820
● VBS1825	18Gx25cm	VBSC1825
● VBS2010	20Gx10cm	VBSC2010
● VBS2015	20Gx15cm	VBSC2015

On request Vigeo is available to provide needles with different diameter and length

Single Action Biopsy Device



- Lightweight and compact to facilitate one-handed operation during procedures
- Precise, rapid-firing mechanism for an intact core tissue sample
- Specimen notch fully exposed when stylet is advanced for ease of sample removal
- The puncture depth can be adjusted between 15 to 22 mm
- Beveled stylet for easy penetration into the lesion with less trauma to surrounding tissues and organs
- Colour coded for quick gauge size identification
- The 14 gauge version features a Trocar point for ease of insertion into dense tissue
- Echogenic tip for enhanced visualization under ultrasound guidance
- Depth markings etched on cannula for precise positioning
- The Coaxial outer needle permits multiple biopsies (US and CT guided)
- Commonly used for the following biopsy procedures: Kidney, Liver, and Lung



One-handed design



Detachable cannula (VVD0A)

CT-CORE Qty/Box 10pcs

Add **C** for Coaxial set (VVD0C)

Add **1** for Trocar tip (VVD01)

Add **A** for Detachable cannula (VVD0A)

CODE	SIZE	COAXIAL KIT
● VVD01410	14Gx10cm	VVD0C1410
● VVD01415	14Gx15cm	VVD0C1415
● VVD01610	16Gx10cm	VVD0C1610
● VVD01615	16Gx15cm	VVD0C1615
● VVD01810	18Gx10cm	VVD0C1810
● VVD01815	18Gx15cm	VVD0C1815
● VVD01820	18Gx20cm	VVD0C1820
● VVD01825	18Gx25cm	VVD0C1825
● VVD02010	20Gx10cm	VVD0C2010
● VVD02015	20Gx15cm	VVD0C2015

On request Vigeo is available to provide needles with different diameter and length

Reusable Biopsy Instrument



- Equipped with a visual and mechanical safety-system
- Two triggers permit ergonomic handling for right and left-handed application, regardless of the position of the extraction location
- The puncture depth can be adjusted between 16 to 22 mm
- Compatible exclusively with Vigeo Autocut Biopsy Needle
- Loaded status indicator



One-handed design



Loaded status indicator



AUTOCUT V

Specially designed to use with VTEK®-VVTEK®

V-TEK

Add **V** for Single trigger version (VV-TEK)

CODE	THROW	SAFETY
V-TEK	16-22 mm	YES
VV-TEK	22 mm	NO

AUTOCUT Qty/Box 10pcs

Add **C** for Coaxial set (VVGC)

Add **1** for Trocar tip (VVG1)

Add **A** for Prostate kit (VVGA)

CODE	SIZE	COAXIAL KIT
● VVG1210	12Gx10cm	VVGC1210
● VVG1410	14Gx10cm	VVGC1410
● VVG1413	14Gx13cm	VVGC1413
● VVG1610	16Gx10cm	VVGC1610
● VVG1615	16Gx15cm	VVGC1615
● VVG1810	18Gx10cm	VVGC1810
● VVG1815	18Gx15cm	VVGC1815
● VVG1820	18Gx20cm	VVGC1820
● VVG1825	18Gx25cm	VVGC1825
● VVG2010	20Gx10cm	VVGC2010
● VVG2015	20Gx15cm	VVGC2015

On request Vigeo is available to provide needles with different diameter and length

Refill Needle for Reusable Biopsy Instrument



AUTOCUT V Specially designed to use with VTEK®- VVTEK® Vigeo Device - MAGNUM® Bard Device



AUTOCUT P Specially designed to use with VVTEK® Vigeo Device - PRO-MAG® ULTRA Argon Device



AUTOCUT E Specially designed to use with PRO-MAG® 2.2 Argon Device - BIOPTY® Bard Device

- Single patient use core biopsy needle designed for use with Reusable Biopsy Instrument
- Available in several needle gauge sizes and lengths
- Centimeter depth markings assist in needle placement
- Attached removable spacer maintains the distance between the two needle hubs promoting ease of handling and simplifying targeting
- The Coaxial outer needle permits multiple biopsies (US and CT guided)
- Colour coded for quick gauge size identification
- Intended for use in obtaining biopsies from soft tissues such as Breast, Kidney, and Prostate

AUTOCUT Qty/Box 10 pcs			
Add C for Coaxial set			
Add 1 for Trocar tip			
Add A for Prostate kit			
CODE	SIZE		
● VVG1210 VVGP1210 VVE1210	12Gx10cm		
● VVG1410 VVGP1410 VVE1410	14Gx10cm		
● VVG1415 VVGP1415 VVE1415	14Gx15cm		
● VVG1615 VVGP1615 VVE1615	16Gx15cm		
● VVG1810 VVGP1810 VVE1810	18Gx10cm		
● VVG1815 VVGP1815 VVE1815	18Gx15cm		
● VVG1820 VVGP1820 VVE1820	18Gx20cm		
● VVG1825 VVGP1825 VVE1825	18Gx25cm		
● VVG2010 VVGP2010 VVE2010	20Gx10cm		
● VVG2015 VVGP2015 VVE2015	20Gx15cm		

On request Vigeo is available to provide needles with different diameter and length

One-handed Menghini Aspiration Device



- Single-handed safe and fast operation
- Pyramidal Tip allows for easy insertion
- Menghini design cannula for cylindrical and large sampling
- Internal echogenic marker to prevent cancerous cells spreading
- Intended for use in Liver, Lymph Nodes, and Thyroid
- Colour coded for quick gauge size identification
- Centimeter depth markings assist in needle placement
- The Coaxial outer needle permits multiple biopsies (US and CT guided)



One-handed design simplifies loading and operation whilst allowing for convenient manipulation of the ultrasound transducer

HEPASHOT Qty/Box 10pcs

Add **C** for Coaxial set (VVC0C)

CODE	SIZE	COAXIAL KIT
● VVC01615	16Gx15cm	VVC0C1615
● VVC01620	16Gx20cm	VVC0C1620
● VVC01810	18Gx10cm	VVC0C1810
● VVC01815	18Gx15cm	VVC0C1815
● VVC01820	18Gx20cm	VVC0C1820
● VVC02005	20Gx05cm	VVC0C2005
● VVC02010	20Gx10cm	VVC0C2010
● VVC02015	20Gx15cm	VVC0C2015
● VVC02105	21Gx05cm	VVC0C2105
● VVC02110	21Gx10cm	VVC0C2110

On request Vigeo is available to provide needles with different diameter and length

HEPATIC

SOFT TISSUE BIOPSY

CE
0476

Menghini Aspiration Device



- Pyramidal Tip allows for easy insertion
- Menghini design cannula for cylindrical and large sampling
- Internal echogenic marker to prevent cancerous cells spreading
- Intended for use in Liver, Lymph Nodes, and Thyroid
- Centimeter depth markings assist in needle placement

HEPATIC Qty/Box 10pcs

CODE	SIZE
● VVC1815	18Gx15cm
● VVC1820	18Gx20cm
● VVC2015	20Gx15cm

On request Vigeo is available to provide needles with different diameter and length

HEPASET

SOFT TISSUE BIOPSY

CE
0476

Menghini Aspiration Device



- Biopsy needle, 90 mm
- Special Menghini bevel for excellent tissue sampling
- Thin-walled needle for minimal puncture trauma
- Aspiration Syringe 10 ml - Injection Needle - Scalpel

HEPASET Qty/Box 10pcs

CODE	SIZE
● VVA1609	16Gx9cm
● VVA1709	17Gx9cm
● VVA1809	18Gx9cm

On request Vigeo is available to provide needles with different diameter and length

Manual Capture Biopsy Device



- Manual advancement of cannula and stylet
- Removable stylet allows multiple sampling capability
- Thin-wall needle yields larger core
- Centimeter depth markings assist in needle placement

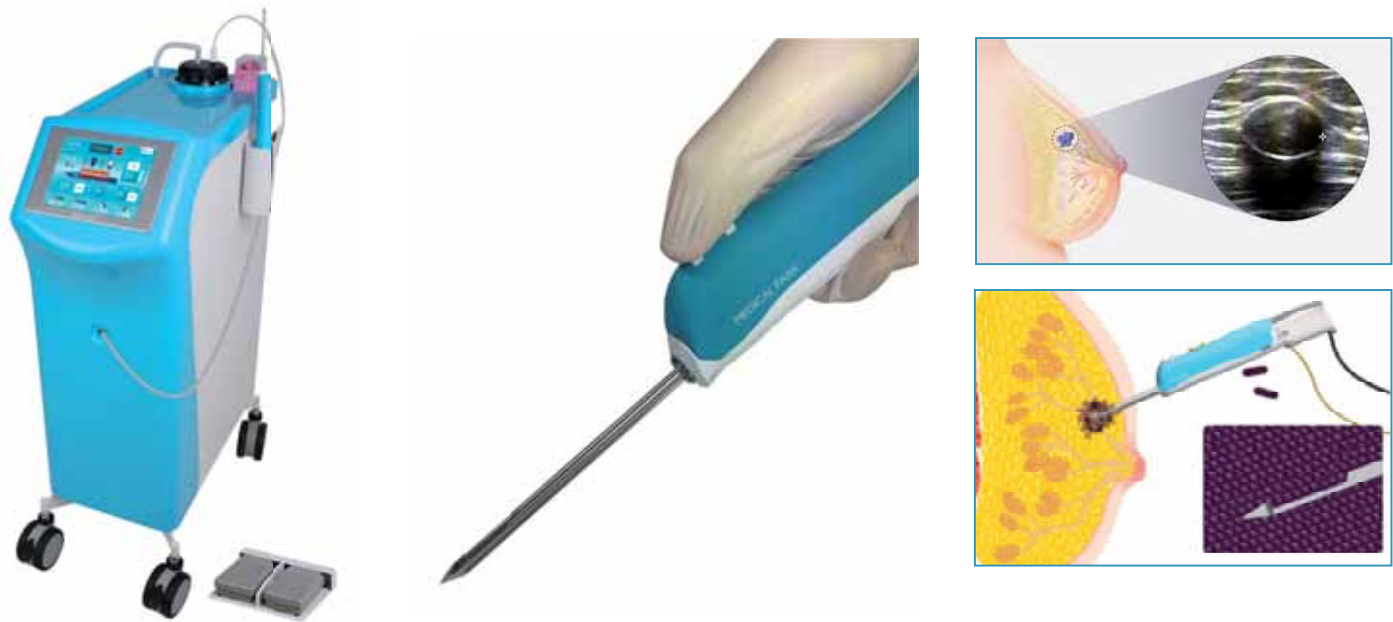


Removable stylet

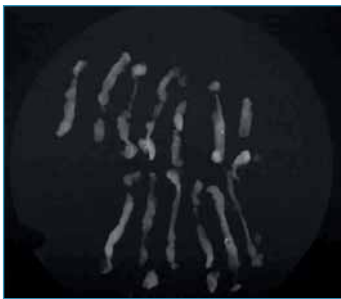
EASYCUT Qty/Box 10pcs		
Add C for Coaxial set (VVMC)		
CODE	SIZE	COAXIAL KIT
● VVM1410	14Gx10cm	VVMC1410
● VVM1415	14Gx15cm	VVMC1415
● VVM1610	16Gx10cm	VVMC1610
● VVM1615	16Gx15cm	VVMC1615
● VVM1810	18Gx10cm	VVMC1810
● VVM1815	18Gx15cm	VVMC1815
● VVM1820	18Gx20cm	VVMC1820
● VVM1825	18Gx25cm	VVMC1825
● VVM2010	20Gx10cm	VVMC2010
● VVM2015	20Gx15cm	VVMC2015

On request Vigeo is available to provide needles with different diameter and length

Vacuum Assisted Ultrasound Guided Breast Biopsy System



- Developed to overcome the weaknesses with complete biopsies
- Large amounts of samples can be obtained through a single insertion, thus allowing for a more accurate diagnosis
- Evaluated in clinical trials as a therapeutic tool, with an expanding role in the surgical treatment for excision of benign breast lesions such as fibroadenomas, nipple discharge, abscesses, and gynaecomastia
- An intuitive interface provides the operator easy control
- The aspirated tissue is automatically discharged by vacuum suction
- The inner blade has 4 step adjustments - 5mm ,10mm ,15mm, and 20mm



X-Ray



Ultrasound

BEXCORE SYSTEM

System body - Driver - Foot switch - Suction bottle

CODE

BXS100

BEXCORE PROBE

CODE	SIZE
BXC145	8Gx109mm
BXC140	10Gx109mm

BEXCORE TISSUE MARKER

CODE	SIZE	MARKER
040239	363,7mm	2x4 mm

Breast Tissue Marker Device



- Bar-bell shaped pyrolytic carbon coated ceramic with exceptionally biocompatibility with clear imaging characteristics
- Unique shapes designed to prevent migration
- No allergy response or hypersensitivity reported
- Designed for safe, reliable, and precise placement during core biopsies
- Permanent and clear visibility with mammography, ultrasound and MRI
- No interference with MRI visualization, lower level of artifact than metal markers
- No interference with Tomosynthesis visualization
- Available in three distinct size configurations
- Available for vacuum assisted and core biopsy needle devices

WHEN TO USE

- Marking after removal of tumor
- Marking microcalcification area after breast vacuum assisted biopsy (VAB)
- Marking of suspicious breast lesions after critical core biopsy
- Orientation for planning radiation therapy



Ultrasound



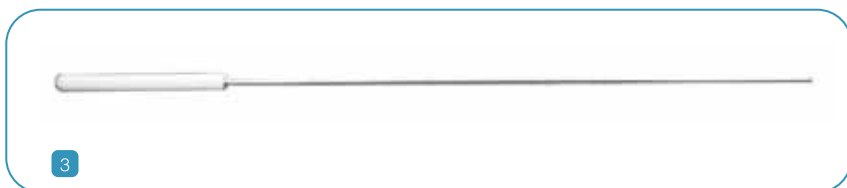
Mammography

BIOMARC Qty/Box 10pcs			
CODE	SIZE	MARKER	DESCRIPTION
040220	8Gx165,3mm	2x4mm	Flexible Applicator, 8G Mammotome®
040203	9Gx165,3mm	2x4mm	Flexible Applicator, 11G Mammotome®
040204	9 G x 1 2 0 m m	2x4mm	Flexible Applicator, 9G Eviva® / 10G Spirotome®
040228	9Gx363,7mm	2x4mm	Flexible Applicator, 9G Atec®
040239	9Gx363,7mm	2x4mm	Flexible Applicator, 10G SenoRX® / 10G Bexcore®
040306	13Gx117,7mm	2x4mm	Rigid Applicator, 13G
040320	14Gx117,7mm	1x4mm	Rigid Applicator, 14G
040300	14Gx117,7mm	1x3mm	Rigid Applicator, 14G
040310	17Gx117,7mm	0,9x5mm	Rigid Applicator, 17G

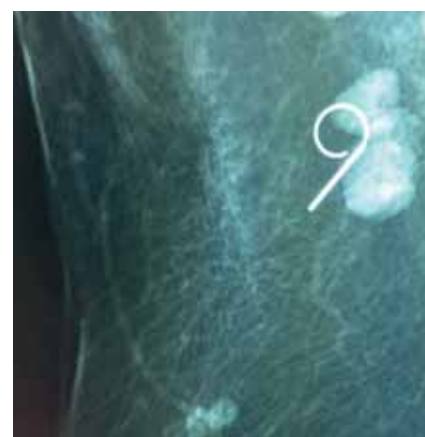
On request Vigeo is available to provide needles with different diameter and length



- Preoperative marking of local lesions
- One-handed design for a convenient manipulation of the ultrasound transducer
- Retractable hook with unique flexibility of its Polyamid guiding thread
- Indicator on wing shows direction of hook
- Echogenic needle tip for ultrasound use
- Hook release at the needle tip for accurate targeting
- Centimeter depth markings assist in needle placement
- Patented stopper for partial hook release prior to confirming position
- 9mm Loop hook



1. Half exposure - 2. Full exposure - 3. Stiffener cannula



Mammography

RELOCK SOFT Qty/Box 10pcs

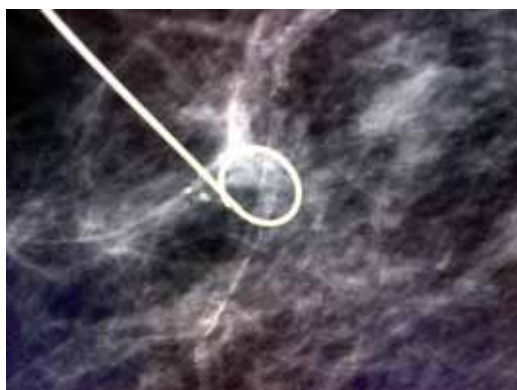
CODE	SIZE
● VVRPS1905	19Gx5cm
● VVRPS1907	19Gx7cm
● VVRPS1910	19Gx10cm

On request Vigeo is available to provide needles with different diameter and length

Repositionable Breast Localization Device



- Preoperative marking of local lesions
- Retractable hook with unique flexibility
- Indicator shows direction of hook
- Echogenic needle tip for ultrasound use
- Hook release at the needle tip for accurate targeting
- Centimeter depth markings assist in needle placement
- Fixation piece for preoperative fixing of the wire
- 9mm Loop hook



Mammography

RELOCK Qty/Box 10pcs

CODE	SIZE
● VVR1905	19Gx5cm
● VVR1907	19Gx7cm
● VVR1910	19Gx10cm
● VVR2007	20Gx07cm
● VVR2010	20Gx10cm
● VVR2015	20Gx15cm

On request Vigeo is available to provide needles with different diameter and length

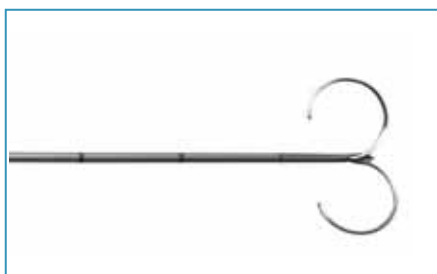
Repositionable Breast Localization Device



- Preoperative marking of local lesions
- Retractable hook with unique flexibility
- Indicator shows direction of hook
- Echogenic needle tip for ultrasound use
- Hook release at the needle tip for accurate targeting
- Centimeter depth markings assist in needle placement
- Fixation piece for preoperative fixing of the wire
- Double 7mm Loop hook



Half exposure



Full exposure

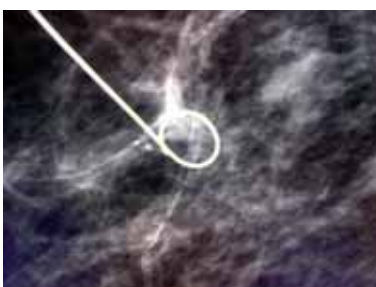
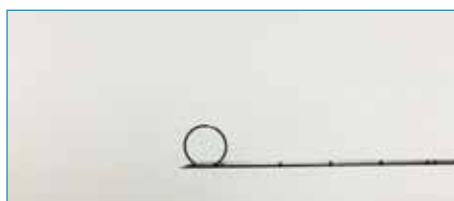
RELOCK DUO Qty/Box 10pcs

CODE	SIZE
● VVNSP1905	19Gx5cm
● VVNSP1907	19Gx7cm
● VVNSP1910	19Gx10cm

On request Vigeo is available to provide needles with different diameter and length



- Preoperative marking of local lesions
- One-handed design for a convenient manipulation of the ultrasound transducer
- Removable handle for mammography procedure
- Retractable hook with unique flexibility
- Indicator shows direction of hook
- Echogenic needle tip for ultrasound use
- Hook release at the needle tip for accurate targeting
- Centimeter depth markings assist in needle placement
- Patented stopper for partial hook release prior to confirming position
- 9mm Loop hook



Mammography



Removable handle

RELOCK PREMIUM Qty/Box 10pcs

CODE	SIZE
● VVRP1905	19Gx5cm
● VVRP1907	19Gx7cm
● VVRP1910	19Gx10cm

On request Vigeo is available to provide needles with different diameter and length

RELOCK PREMIUM DUO WOMEN'S HEALTH

CE
0476

Repositionable One-Handed Breast Localization Device

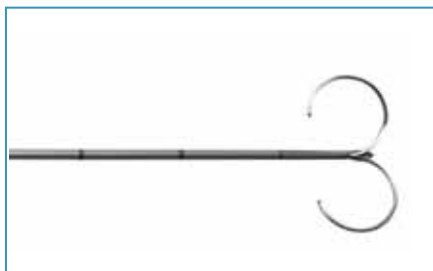
PATENT PENDING



- Preoperative marking of local lesions
- One-handed design for a convenient manipulation of the ultrasound transducer
- Removable handle for mammography procedure
- Retractable hook with unique flexibility
- Indicator shows direction of hook
- Echogenic needle tip for ultrasound use
- Hook release at the needle tip for accurate targeting
- Centimeter depth markings assist in needle placement
- Patented stopper for partial hook release prior to confirming position
- Double 7mm Loop hook



Half exposure



Full exposure



Removable handle

RELOCK PREMIUM DUO Qty/Box 10 pcs

CODE	SIZE
● VVNSPX1905	19Gx5cm
● VVNSPX1907	19Gx7cm
● VVNSPX1910	19Gx10cm

On request Vigeo is available to provide needles with different diameter and length

Breast Localization Device



- Preoperative marking of local lesions
- Puncture cannula with ultrasonic tip with guidance wire in place
- Available Localization wire with reinforcement
- Transparent cannula connector
- The X-shaped hook provides excellent fixation and is intended to limit migration
- The 3 cm long stiff portion of the shaft is easily palpated during surgery
- Beads placed at 1cm intervals produce a rapid visual reference to the lesion
- Blunt Tip Stiffening Cannula available



Single Hook



Stiffened Wire



CM Marked Wire



Double Hook

SURGIMARC Qty/Box 20pcs

Add **T** for Stiffened Wire (VVNT)

Add **M** for Wire Depth Distal Marking (VVNM)

Add **X** for Double Anchoring Hook (VVNX)

CODE	SIZE
● VVN1807 VVNT1807 VVNM1807 VVNX1807	18Gx7cm
● VVN1810 VVNT1810 VVNM1810 VVNX1810	18Gx10cm
● VVN2007 VVNT2007 VVNM2007 VVNX2007	20Gx7cm
● VVN2010 VVNT2010 VVNM2010 VVNX2010	20Gx10cm
● VVN2107 VVNT2107 VVNM2107 VVNX2107	21Gx7cm
● VVN2110 VVNT2110 VVNM2110 VVNX2110	21Gx10cm

On request Vigeo is available to provide needles with different diameter and length

One-Handed Breast Localization Device



- Preoperative marking of local lesions
- One-handed design for a convenient manipulation of the ultrasound transducer
- Puncture cannula with ultrasonic tip with guidance wire in place
- Available Localization wire with reinforcement
- The X-shaped hook provides excellent fixation and is intended to limit migration
- The 3 cm long stiff portion of the shaft is easily palpated during surgery
- Beads placed at 1cm intervals produce a rapid visual reference to the lesion
- Blunt Tip Stiffening Cannula available



CM Marked Wire



Detachable Cannula



One-handed design

SURGIMARC SLIM Qty/Box 10pcs

Add **X** for Double Hook (VVNSX)

Add **XT** for Double Hook and Stiffened Wire (VVNSXT)

Add **Z** for Wire Depth Distal Marking (VVNSZ)

Add **T** for Detachable Cannula (VVNST)

Add **ZT** for Double Hook and Detachable Cannula (VVNSZT)

CODE	SIZE
● VVNS1807 VVNSX1807 VVNSXT1807 VVNSZ1807 VVNST807 VVNSZT1807	18Gx7cm
● VVNS1810 VVNSX1810 VVNSXT1810 VVNSZ1810 VVNST1810 VVNSZT1810	18Gx10cm
● VVNS2007 VVNSX2007 VVNSXT2007 VVNSZ2007 VVNST2007 VVNSZT2007	20Gx7cm
● VVNS2010 VVNSX2010 VVNSXT2010 VVNSZ2010 VVNST2010 VVNSZT2010	20Gx10cm
● VVNS2107 VVNSX2107 VVNSXT2107 VVNSZ2107 VVNST2107 VVNSZT2107	21Gx7cm
● VVNS2110 VVNSX2110 VVNSXT2110 VVNSZ2110 VVNST2110 VVNSZT2110	21Gx10cm

On request Vigeo is available to provide needles with different diameter and length

Stereotactic Table and Biopsy Station Cover



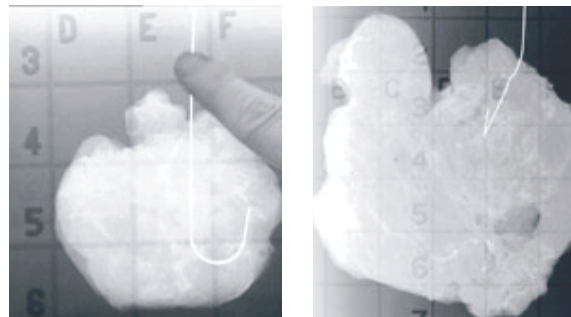
- Stereotactic Table Drape cover with elastic for quick set-up and removal
- One piece disposable Biopsy Station cover with elastic and adhesive bands
- Fits all the Stereotactic Table and Biopsy Autoguide brands in the market
- Complete fluid containment and easy clean up



XDRAPE		
CODE	DESCRIPTION	Qty/Box
VIG-13-1548EU	Mammotest Table Draping System	20
VIG-10-9601EU	Mammotest Stage Draping System	50
VIG-13-1549EU	Multicare Table Draping System	10
VIG-10-9600EU	Multicare Stage Draping System	20

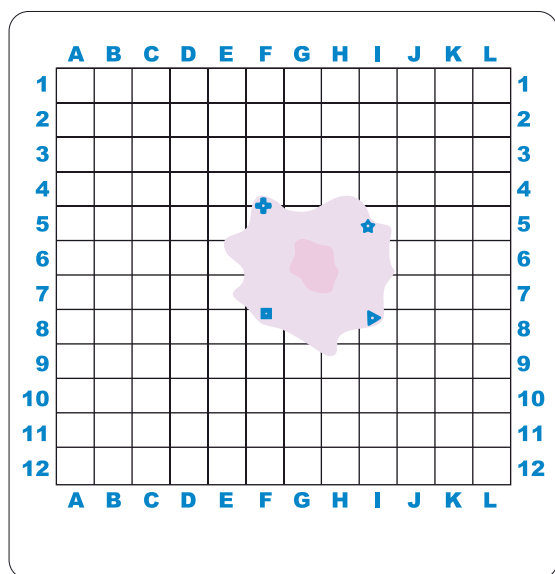
On request Vigeo is available to provide needles with different diameter and length

Tissue Transfer and X-Ray System



- Safely image and transport of surgical breast specimens without losing orientation
- Extremely radiolucent and radiopaque grid with pinpointing side indicators
- Precise anatomical assignment of sample margins
- Special stands allowing horizontal and vertical examination
- Once pinned the tumour tissue remains stable and can be easily transported

AREOLAR ESTERNAL DEEP MEDIAL CAUDAL CRANIAL

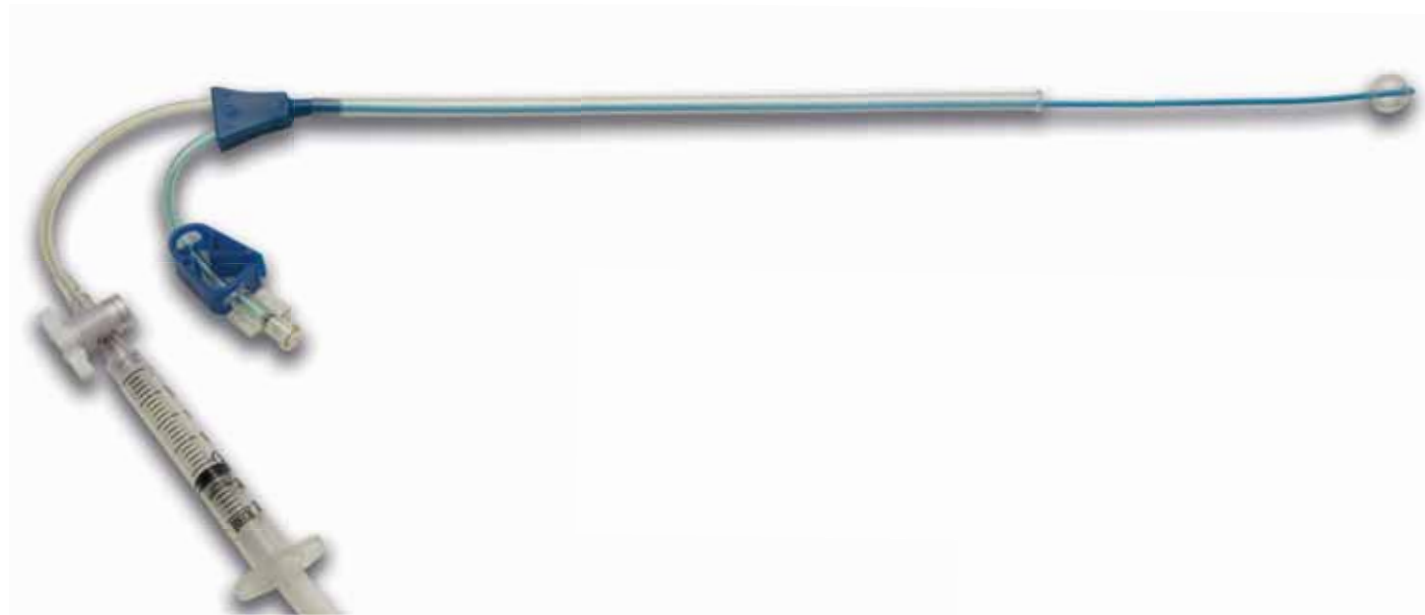


VVX3P Orientation Pins Version

SCREEN VISION		
CODE	THICKNESS	Qty/Box
VVX2	20mm	20
VVX3	30mm	10
VVX3P	30mm + Pins	10

On request Vigeo is available to provide needles with different diameter and length

Hysterosalpingography and Hysterosonography Catheter



- Flexible radiopaque polyurethane catheter shaft
- Soft, latex-free concentric balloon 3 mm from the catheter tip
- Atraumatic catheter tip
- Front delivery catheter tip version allows guide wire introduction
- Shapeable version with an embedded stylet in cases when stenosis is present or when the vaginal tract and cervical canal are not aligned
- Stable placement sheath for easy introduction of the catheter into the cervical canal
- Syringe included, preset and mounted on the stopcock for balloon inflation port
- Available in two diameters 5F (Balloon 1,5ml) and 7F (Balloon 3,0ml)
- Stylet available for cases when additional stiffness is needed



Shapeable



Front delivery

ISTERIX Qty/Box 10pcs

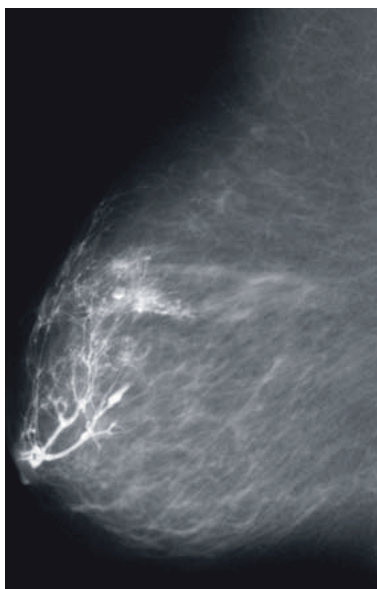
CODE	SIZE	DESCRIPTION
VMI1154	5F	Side delivery
VMI1155	7F	Side delivery
VMI1156	22G	Stylet
VMI1162	5F	Without balloon
VMI1185	5F	Shapeable
VMI1187	7F	Shapeable
VMI1188	5F	Front delivery
VMI1189	7F	Front delivery
VMI2002	5F	Shapeable sheath

On request Vigeo is available to provide needles with different diameter and length

Galactography Infusion Unit



- Designed to provide ease of insertion with minimal patient discomfort
- Intended for the cannulation of the lactiferous breast duct
- 27G or 30G blunt cannula bent with a 90 degree angle, 300mm PVC tubing and a luer lock hub
- Dilators available ("D" version)



Mammography

DUCTAL KIT <small>Qty/Box 20pcs</small>		
CODE	SIZE	DESCRIPTION
VVMK27/C20	27G	Without Dilators
VVMK30/C20	30G	Without Dilators
VVMK27/D20	27G	With Dilators
VVMK30/D20	30G	With Dilators

On request Vigeo is available to provide needles with different diameter and length

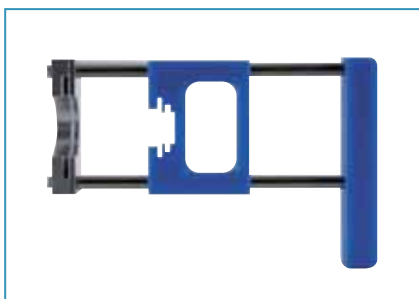
Chiba Needle for Aspiration Biopsy and Prenatal Diagnosis



- Puncture cannula developed especially for ultrasonic diagnostics
- Echogenic needle tip assists precise needle tip positioning
- Safe for patient and user, thanks to the adjustable sliding depth stopper
- Graduated puncture cannula to assist in precise depth placement of the needle
- Transparent luer cone for visual inspection of aspirate
- Colour coded hub for easy identification of needle gauge size
- Usable for a variety of applications (cytological biopsy, prenatal puncture, and for percutaneous applications in general)



Handly (code: VVCH)



Syringe Gun (code: SG01)

CYTOCAN Qty/Box 20pcs

Add **U** for Chorial kit (VVBU)

CODE	SIZE
● VVB1810	18Gx10cm
● VVB1815	18Gx15cm
● VVB1820	18Gx20cm
● VVB2010	20Gx10cm
● VVB2015	20Gx15cm
● VVB2020	20Gx20cm
● VVB2105	21Gx5cm
● VVB2110	21Gx10cm
● VVB2115	21Gx15cm
● VVB2120	21Gx20cm
● VVB2210	22Gx10cm
● VVB2215	22Gx15cm
● VVB2220	22Gx20cm
● VVB2310	23Gx10cm
● VVB2315	23Gx15cm
● VVB2505	25Gx5cm

On request Vigeo is available to provide needles with different diameter and length

Disposable Biopsy Punch



- Sterile single-use, stainless steel instrument for accurate and gentle skin biopsies
- Stainless steel sharp cutting edge
- Ergonomic ribbed handle and anti-slip surface for sure grip control
- Size embossed on each punch for easy identification
- Wide range of sizes



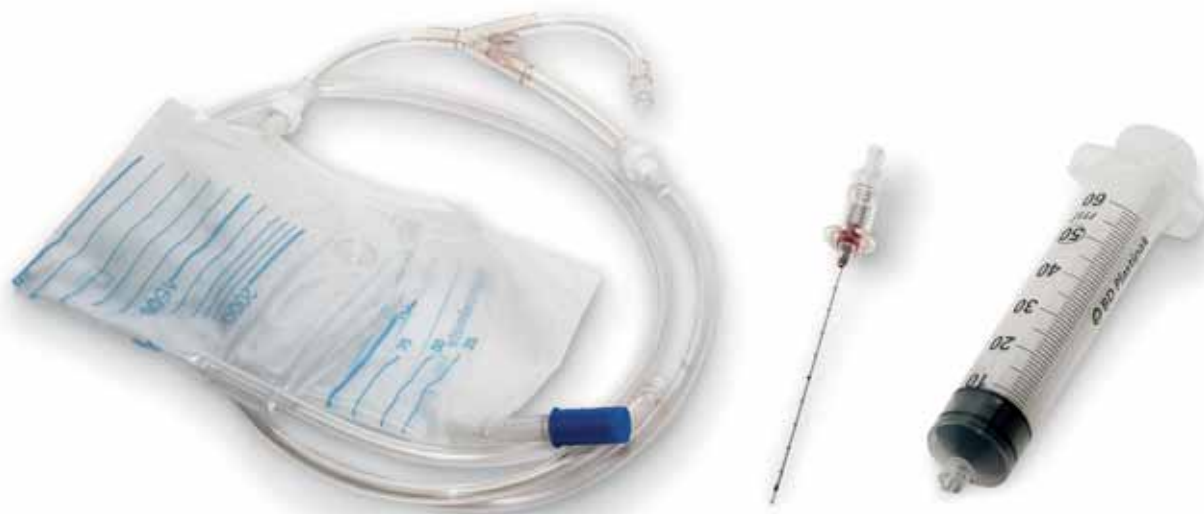
Ergonomic ribbed handle

DPUNCH Qty/Box 20pcs

CODE	SIZE
VPT2	2,0mm
VPT3	3,0mm
VPT4	4,0mm
VPT5	5,0mm
VPT6	6,0mm

On request Vigeo is available to provide needles with different diameter and length

Thoracentesis and Paracentesis Set (TAPS)



- Easy, fast, and practical system with single-acting valves
- Waste bags with non-return valve and drainage tap
- Ready to use set with wide choice of needle sizes
- Available in various kit configurations
- 90cm Connection tubes provided with 3-way stopcock
- Disposable, double packaged, sterile



Verres Needle



Needle Catheter

TORAPARAKIT Qty/Box 25pcs

CODE	DESCRIPTION
VV01T1412A	Stopcock 3Way + Verres needle (14Gx12cm) + 1 Drainage bag (2lt)
VV01T1412B	Stopcock 3Way + Verres needle (14Gx12cm) + 2 Drainage bag (2lt)
VV01T1412C	Stopcock 3Way + Needle Catheter (6Fx12cm) + 1 Drainage bag (2lt)

On request Vigeo is available to provide needles with different diameter and length

Single Step Drainage Catheter



- Large oval drainage side holes
- Large lumen and tapered tip
- Locking system available
- Internal diameter of hub and catheter match
- Centimeter depth markings assist in catheter placement
- Echogenic needle tip with Trocar stylet
- Hydrophilic coating for easy penetration
- Easy-to-remove pigtail

V-DRAIN with locking pigtail Qty/Box 5pcs

CODE	SIZE
VVVB00620	6Fx19cm
VVVB00630	6Fx29cm
VVVB00720	7Fx19cm
VVVB00730	7Fx29cm
VVVB00820	8Fx19cm
VVVB00830	8Fx29cm
VVVB01020	10Fx19cm
VVVB01030	10Fx29cm
VVVB01430	14Fx29cm
VVVB01630	16Fx29cm

V-DRAIN without locking pigtail Qty/Box 5pcs

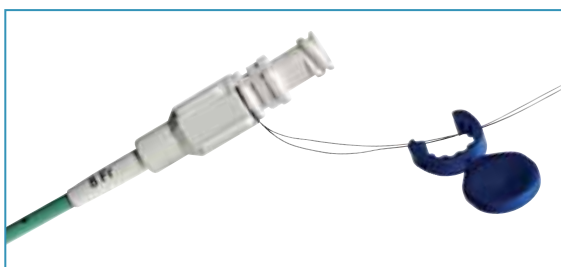
CODE	SIZE
VVVB0620	6Fx19cm
VVVB0630	6Fx29cm
VVVB0720	7Fx19cm
VVVB0730	7Fx29cm
VVVB0820	8Fx19cm
VVVB0830	8Fx29cm
VVVB1020	10Fx19cm
VVVB1030	10Fx29cm
VVVB1430	14Fx29cm
VVVB1630	16Fx29cm



Large oval holes



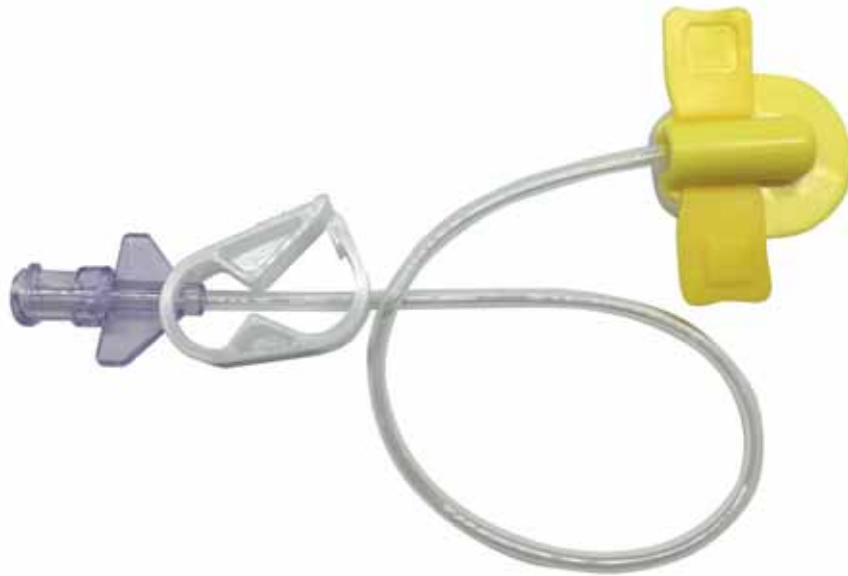
Trocar stylet



Locking system available

On request Vigeo is available to provide needles with different diameter and length

Port Access Needle



- Single handed infusion port non coring needle access
- Biocompatible materials – containing no latex or DEHP
- Retaining wings provide a good grip
- Easy removal of the cannula
- Luer lock Y-site allows additional medication
- Cushioned platform for patient comfort



Y-site allows additional medication



Cushioned platform

VP-JET Qty/Box 50pcs

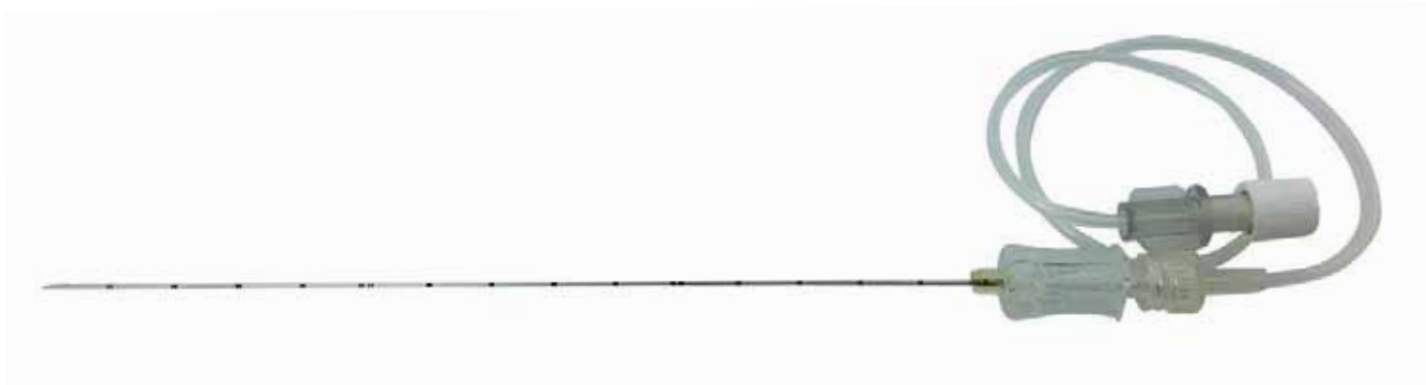
Add **Y** for double injection site

Add **YS** for double injection site needle free

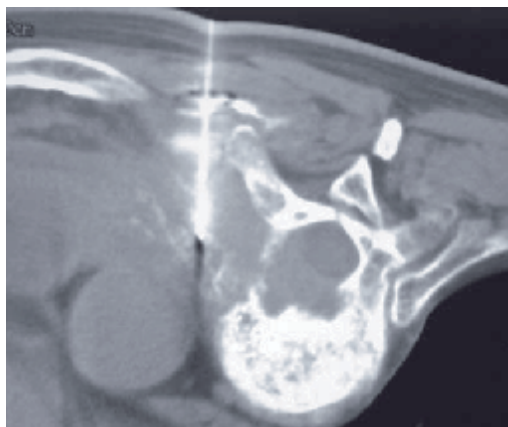
CODE	SIZE
● VP2020	20Gx20cm
● VP2025	20Gx25cm
● VP2220	22Gx20mm
● VP2225	22Gx25cm

On request Vigeo is available to provide needles with different diameter and length

Percutaneous Ethanol Injection Needle (PEIT)



- Larger volume of treated tissue
- Lower ethanol flow into the peritoneal cavity
- No deflection of the needle from the path
- Suitable for small and deep nodules
- Centimeter depth markings assist in needle placement
- Indicator shows flow direction
- Colour coded for quick gauge size identification
- Luer extension tube for a flexible connection to the syringe



CT

ALCOJECT Qty/Box 10pcs

CODE	SIZE	DESCRIPTION
● VVHA32115	21Gx15cm	Open Tip

On request Vigeo is available to provide needles with different diameter and length

Bone and Bone Marrow Biopsy Device



- Designed for quick and easy cortical penetration
- Ergonomic T- handle for increased control
- Stylet with pyramidal tip
- Cannula with fish mouth tip
- Centimeter depth markings assist in needle placement
- Extraction cannula with centimeter markings and blunt tip
- Improved patient comfort
- B-Locking technology to avoid deflection during the sample release



Fish mouth tip



B-Locking technology

BLOCK Qty/Box 10 pcs

CODE	SIZE
● VVJT0810	8Gx10cm
● VVJT0815	8Gx15cm
● VVJT1110	11Gx10cm
● VVJT1115	11Gx15cm
● VVJT1307	13Gx7cm
● VVJT1310	13Gx10cm

On request Vigeo is available to provide needles with different diameter and length

Bone and Bone Marrow Biopsy Device



- Designed for quick and easy cortical penetration
- Ergonomic T- handle for increased control
- Stylet with pyramidal tip
- Cannula with fish mouth tip
- Centimeter depth markings assist in needle placement
- Extraction cannula with centimeter markings and blunt tip
- Improved patient comfort



Fish mouth tip

BCUT Qty/Box 10pcs

CODE	SIZE
● VVJ0810	8Gx10cm
● VVJ0815	8Gx15cm
● VVJ1110	11Gx10cm
● VVJ1115	11Gx15cm
● VVJ1307	13Gx7cm
● VVJ1310	13Gx10cm

On request Vigeo is available to provide needles with different diameter and length

Bone and Bone Marrow Biopsy Device



- Cannula and stylet designed to allow an easier penetration of the bone cortex
- Adjustable depth stop for sternal or paediatric application, which can be removed for iliac crest use
- Luer slip and luer-lock syringes fit securely



Ergonomic handle

MYELO Qty/Box 10pcs

Add **1** for Ergonomic handle (VVI1)

Add **E** for Explant version (VVIE)

CODE	SIZE
VVI1410/50	14Gx10/50mm
VVI1430/70	14Gx30/70mm
VVI1510/50	15Gx10/50mm
VVI1530/70	15Gx30/70mm
VVI1610/50	16Gx10/50mm
VVI1630/70	16Gx30/70mm
VVI1810/50	18Gx10/50mm

On request Vigeo is available to provide needles with different diameter and length

Bone and Bone Marrow Biopsy Device



- Ergonomic T-handle design to minimize hand and arm fatigue
- Cannula and stylet designed to allow an easier penetration of the bone cortex
- Adjustable depth stop for sternal or paediatric application, which can be removed for iliac crest use
- Luer slip and luer-lock syringes fit securely



Colour code

ERGO Qty/Box 10pcs

Add **E** for Explant version (**VVILE**)

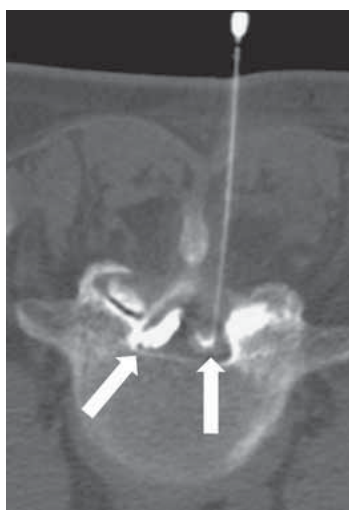
CODE	SIZE
VVIL1410/50	14Gx10/50mm
VVIL1430/70	14Gx30/70mm
VVIL1510/50	15Gx10/50mm
VVIL1530/70	15Gx30/70mm
VVIL1610/50	16Gx10/50mm
VVIL1810/50	18Gx10/50mm

On request Vigeo is available to provide needles with different diameter and length

CT-Guided Percutaneous Biopsy of Spinal Lesions



- Chiba fine needles for local anesthesia included
- Seldinger placement of introducer
- Suitable for accurate biopsy of deep bone lesions
- An inner trocar guides the outer cannula to the lesion margin offering control and precision whilst traversing dense bone
- The cannula remains in situ permitting multiple biopsies
- High grade steel and a Trepine tip, facilitate superior sampling of critical lesions



CT

T'AM KIT Qty/Box 5pcs

CODE	SIZE
TCAK2510	13Gx100mm
TCAK2512	13Gx125mm
TCAK2515	13Gx150mm
TCAK3010	11Gx100mm
TCAK3125	11Gx125mm
TCAK3015	11Gx150mm

On request Vigeo is available to provide needles with different diameter and length

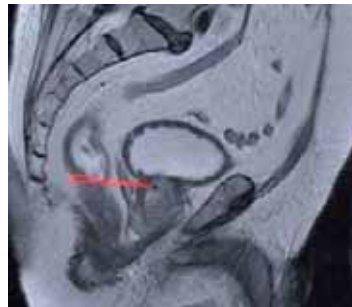
Fiducial Marker for Radiation Therapy



- Used to target localization for lesions or organs which move in respect to external anatomy
- Pure gold cylinders version specially knurled to inhibit migration
- Pyrolytic carbon coated zirconium oxide bar-bell version to reduce the artifacts
- Provide visualization under fluoroscopy, X-ray, CT, MRI, ultrasound and other imaging modalities
- Preloaded in a pre-waxed tipped needle or in a wax-free special version
- Each individually packaged for wide flexibility during the treatment



CT



MRI

BIOMARC IGRT

CODE	SIZE	DESCRIPTION	Qty/Box
040116	17Gx20cm	1,2x3mm Gold Marker	3
040118	17Gx20cm	1x4mm Gold Marker-Ergonomic handle	10
040125	17Gx30cm	1x3mm Gold Marker	3
040117	18Gx20cm	1x5mm Ceramic Marker	1
040135	18,5Gx13cm	1x3mm Ceramic Marker	3
040113	18Gx20cm	1x3mm Ceramic Marker	3
040146	18Gx20cm	0,9x5mm Ceramic Marker- No Artifact	3

On request Vigeo is available to provide needles with different diameter and length

Sterile Cold Therapy



- Available Pre-Frozen or Instant Cold pack
- Reduces bleeding, bruising, pain, and inflammation
- Suitable after minimally invasive Breast and Soft Tissue Biopsy procedures



After breast biopsy

ARCTIC - COLDSPOT		
CODE	DESCRIPTION	Qty/Box
500	COLD SPOT Pre-frozen Gel	100
V500	ARCTIC Instant Cold Pack	40

Transducer Covers



Disposable covers for US procedures

- General purpose sterile set includes one PU probe cover, one Sterile gel packet and two elastic bands.
- Premium version provides quick and easy loading of an ultrasound probe into a long, sterile probe cover
- Safe adhesive version eliminates the need of Gel under the Cover



General Purpose set



Premium Version



Safe Adhesive version

ECOVER Qty/Box 20pcs

Add **21 or 22** for General Purpose set (VIG-11-21 / VIG-11-22)

Add **12** for Premium Version (VIG-11-12)

Add **11** for Safe Adhesive Version (VIG-11-11)

CODE	SIZE	DESCRIPTION
VIG-11-2102EU	10x61cm	PU Cover + Sterile Gel + Elastic Band
VIG-11-2105EU	15x122cm	PU Cover + Sterile Gel + Elastic Band
VIG-11-2107EU	15x244cm	PU Cover + Sterile Gel + Elastic Band
VIG-11-2251EU	14x61cm	PU Cover + Sterile Gel + Elastic Band
VIG-11-2253EU	14x91cm	PU Cover + Sterile Gel + Elastic Band
VIG-11-2252EU	14x147cm	PU Cover + Sterile Gel + Elastic Band
VIG-11-1251EU	14x61cm	PU Cover Kit with ergonomic handle
VIG-11-1253EU	14x122cm	PU Cover Kit with ergonomic handle
VIG-11-1139EU	18x127cm	PE Cover with Adhesive
VIG-11-1140EU	18x249cm	PE Cover with Adhesive

On request Vigeo is available to provide needles with different diameter and length

Multilayer Decontamination Mat















- Used in all environments that require the total absence of contaminating agents and the preservation of high hygiene levels
- Barrier against the growth and spreading of microorganism
- Antibacterial and antifungal glue captures and retains dust and bacteria
- 2mm thickness Mat includes 30 adhesive PE sheets
- Non-adhesive strip for easy removal of used layers
- Dispenser folder for comfortable handling and vertical storage



DECOMAT Qty/Box 5 pcs

CODE	SIZE
VK450	45x120cm
VK600	60x120cm
VK900	90x120cm

On request Vigeo is available to provide needles with different diameter and length

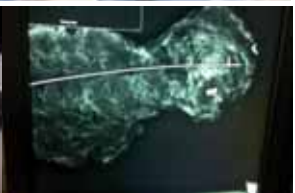
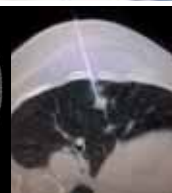
14 G =		2,10 mm
16 G =		1,65 mm
17 G =		1,47 mm
18 G =		1,27 mm
19 G =		1,10 mm
20 G =		0,91 mm
21 G =		0,82 mm
22 G =		0,72 mm
23 G =		0,64 mm
24 G =		0,55 mm
25 G =		0,51 mm
27 G =		0,39 mm



UNI CEI EN ISO 13485:2012

May 2018

www.vigeosrl.it



vigeo

VIGEO srl
San Biagio - Via Dell'Alpino 2
46031 Bagnolo San Vito MN - ITALIA
Tel. +39 0376 449097 - Fax +39 0376 282245
www.vigeosrl.it
customerservice@vigeosrl.it